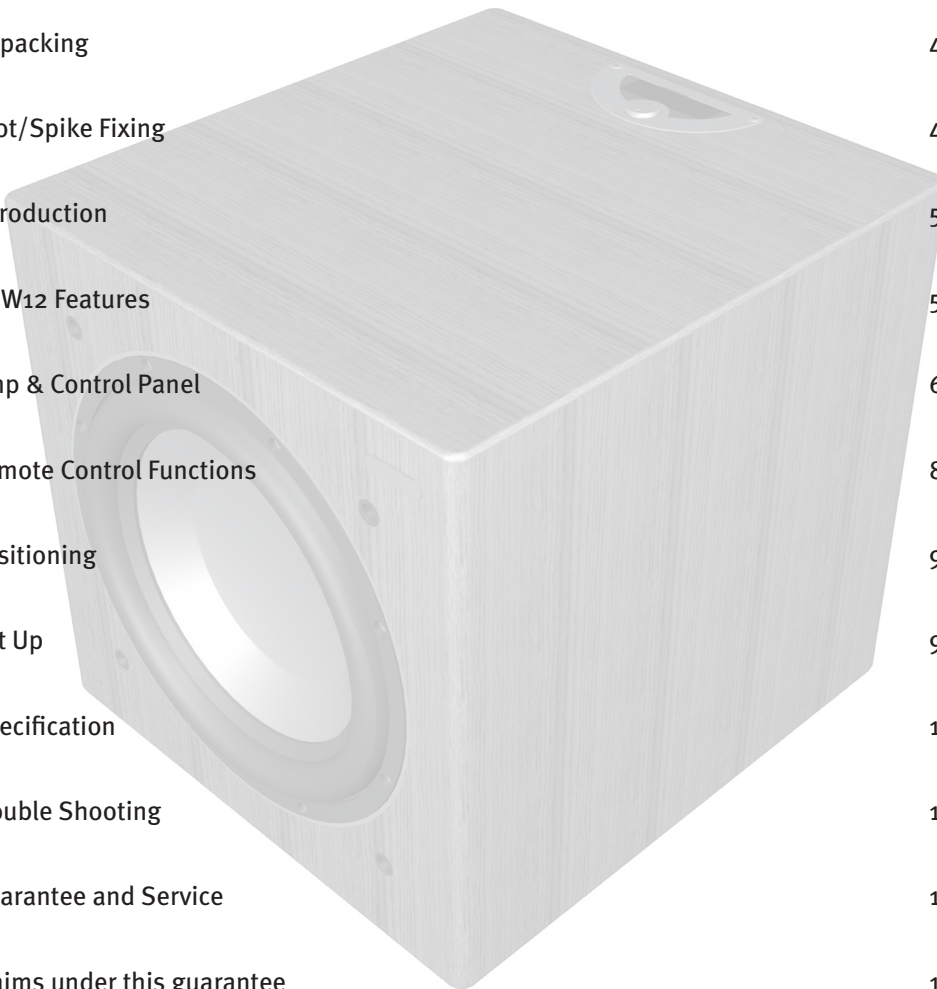


A large, light gray, stylized letter 'G' is the central graphic element, spanning most of the page. It has a thick, rounded top and a vertical stem that ends in a small horizontal bar. The 'G' is positioned on the left side of the page, with its right edge curving towards the center.

GSW12
User Manual

Contents

Important Safety Instructions	2-3
Recycling & RoHS Declaration of Conformity	3
Unpacking	4
Foot/Spike Fixing	4
Introduction	5
GSW12 Features	5
Amp & Control Panel	6-7
Remote Control Functions	8
Positioning	9
Set Up	9-10
Specification	11
Trouble Shooting	12
Guarantee and Service	13
Claims under this guarantee	13
Data Protection	13
EC Declaration of Conformity	14
Owner Information	15



Important Safety Instructions

1. **Read these instructions.** All the safety and operating instructions should be read before this product is operated.
2. **Keep these instructions.** The safety and operating instructions should be retained for future reference.
3. **Heed all warnings.** All warnings on the appliance and in the operating instructions should be adhered to.
4. **Follow all instructions.** All operating and use instructions should be followed.
5. **Do not use this apparatus with water.** The appliance should not be used near water or moisture. For example; in a wet basement or near a swimming pool.
6. **Clean only with a dry cloth.** Great care and attention has gone into the materials chosen to produce the Gold Signature loudspeakers. A gentle wipe with a dry, clean cloth is all that is required to remove any dust. Treat them as you would a fine piece of furniture because that is how they have been designed.
7. **Do not block any ventilation openings.** Install in accordance with the manufacturers instructions.
8. **Do not install near any heat source,** such as radiators, heat registers, stoves, or other apparatus (including amplifiers) that produce heat.
9. **Do not defeat the purpose of the polarised or grounding type plug.** A polarised plug has two blades with one wider than the other. A grounding type plug has two blades and a third grounding prong. The wider blade or the third prong are provided for your safety. If the provided plug does not fit your outlet, consult an electrician for replacement of the obsolete outlet.
10. **Protect the power cord** from being walked on or pinched particularly at plugs, convenience receptacles, and the point where they exit from the apparatus.
11. **Only use attachments/ accessories specified by the manufacturer.**
12. **Use only with** the cart, stand, tripod, bracket, or table specified by the manufacturer or sold with the apparatus. When a cart is used, use caution when moving the cart/apparatus combination to avoid injury from tip-over.



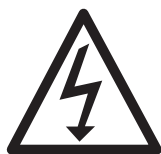
13. **Unplug this apparatus** during lightning storms, or when unused for long periods of time.
14. **Refer all servicing to qualified service personnel.** Servicing is required when the apparatus has been damaged in any way, such as power supply cord or plug is damaged, liquid has been spilled or objects have fallen onto the apparatus, the apparatus has been exposed to rain or moisture, does not operate normally or has been dropped.
15. **This apparatus shall not** be exposed to dripping or splashing water and that no object filled with liquids such as vases shall be placed on the apparatus.
16. **This exclamation point** within an equilateral triangle is intended to alert the user to presence of important maintenance (servicing) instructions in the literature accompanying the appliance.



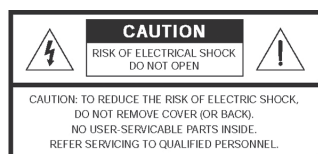
17. **Natural Wood Veneers.** Monitor Audio takes great pride in providing a high quality product. We use only hand selected natural wood veneers, which are carefully matched and hand finished to the highest standard possible. The unique nature of each veneer may result in natural colour and grain variation from samples you may have seen in photos or at the dealer's show room. This is what makes the product a special piece of furniture. If your speaker is finished in a Cherry veneer please be aware that it will naturally darken with age more so than other types of wood veneer.

WARNING!

- THE MAINS PLUG IS USED AS A DISCONNECT DEVICE, THE DISCONNECT DEVICE SHALL REMAIN READILY OPERABLE.
- TO PREVENT FIRE OR SHOCK HAZARD, DO NOT USE THIS PLUG WITH AN EXTENSION CORD, RECEPTACLE OR OTHER OUTLET UNLESS THE BLADES CAN BE FULLY INSERTED TO PREVENT BLADE EXPOSURE
- TO PREVENT FIRE OR SHOCK HAZARD, DO NOT EXPOSE THIS APPLIANCE TO RAIN OR MOISTURE
- TO PREVENT ELECTRIC SHOCK, MATCH WIDE BLADE PLUG TO WIDE SLOT FULLY INSERT.



This lightning flash with an arrow head symbol, within an equilateral triangle, is intended to alert the user to the presence of un-insulated “dangerous voltage” within the products enclosure that may be of sufficient magnitude to constitute a risk of electric shock to the persons.



Warning: To reduce the risk of electric shock, do not remove cover (or back). No user-serviceable parts inside. Refer servicing to qualified service personnel.



This exclamation point within an equilateral triangle is intended to alert the user to presence of important maintenance (servicing) instructions in the literature accompanying the appliance.



This is a “Class II”, “double insulated apparatus”.
This apparatus must NOT have a safety connection to Earth.

Re-cycling

Correct Disposal of Waste Electrical and Electronic Equipment (WEEE) by User in Private Households in the EU

This symbol on the product or accessories indicates that they must not be disposed of with your household wastes throughout the EU. To prevent possible harm to the environment or human health from uncontrolled waste disposal, recycle it responsibly to promote the sustainable reuse of material resources. Instead it is your responsibility to dispose of your waste equipment by handing it over to a designated collection point for recycling WEEE. The separate collection and recycling of your waste equipment will help conserve natural resources and ensure that it is recycled in a manner that protects human health and the environment.

For more specific information about where you can take your equipment for recycling please contact your local city/council office, your local waste disposal service or the outlet where you purchased your GSW12 product.



RoHS Declaration of Conformity

Directive 2002/95/EC of the European Parliament and of the Council on the reduction of the use of certain hazardous substances in electrical and electronic equipment, January 2003.

Background

The RoHS directive restricts the use of Lead (Pb), Cadmium (Cd), Mercury (Hg), hexavalent Chromium (CrVI), polybrominated biphenyl (PBB) compounds, and polybrominated diphenyl ether (PBDE) compounds in electrical and electronic equipment sold in the European Union.



Unpacking



Care must be taken at all times when handling the GSW12 due to the extreme weight of the product. We recommend a two-person lift wherever appropriate.

The feet/spike assemblies and mains power cord/s are contained within the packaging and should be removed.

Please select the power cord appropriate to your Country/location. Mains voltage selection for 100-120 Vac or 220-240 Vac operation is electronically auto selected.

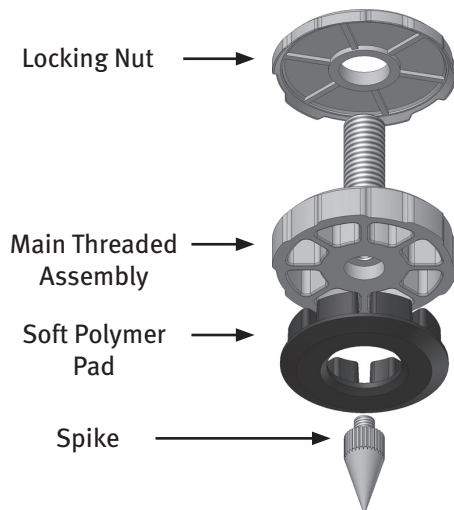
To remove the GSW12 from its carton, place some protective material on the floor and having removed any items of packing from the top of the pack carefully invert the carton. (Also see icons on the carton). Gradually pull the carton upwards to expose the subwoofer, which will be presented with its base uppermost. Remove fixing tape from the bag and expose the base of the cabinet to allow fitting of the spiked feet into the M10 threaded inserts as described below.

Spiked Foot Fixing For Carpeted Floors

The spiked foot assembly incorporates a spike for use on carpeted floors and also, a soft polymer pad (for use on wooden or tiled floors).



Please ensure there are no hidden wires under the carpet, or trailing mains leads that could be damaged by the spikes.



The foot comes fully assembled for use on carpeted floors. All that is required is fixing into the cabinet. This is achieved by simply screwing the feet fully into the 4-threaded inserts in the underside of the cabinet. If your carpet has a very thick pile, remove the soft polymer pad from the foot to ensure the spike goes right through the carpet onto the floor. With great care turn your cabinet the right way up. Place the cabinet in your desired location, and check that it is level on all sides. If it is slightly off level, unscrew the spike at the lowest point and check again. Continue this process until the cabinet is fully level. Use the locking nut on the foot to fix the foot in place and to stop any unwanted vibrations.

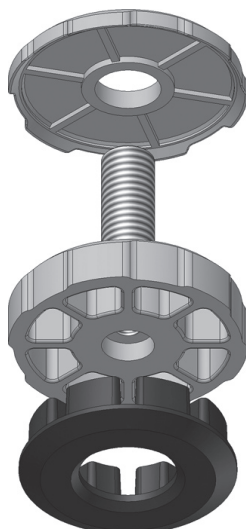


Spiked Foot Fixing For Wooden/Hard Floors

For use on solid floors or where spikes are inappropriate, it is possible to use the foot without the spike insert. To use the foot in this manner carefully grip the knurled portion of the spike and rotate anti clockwise to unscrew the spike fully.

You may find it easier to first remove the polymer pad to gain more purchase on the spike.

The pad should be replaced before carrying out the levelling operation previously described.



Introduction

Thank you for your purchase of Monitor Audio GSW12 subwoofer, which has been designed and constructed using quality systems and materials to provide years of enjoyment, reliability and pride of ownership.

This product, as with all the Gold Signature range, is hand crafted from top to bottom using traditional woodworking skills for our sumptuous cabinets, married with the state of the art technology of our renowned drive units.

Music is and should be a natural enhancement of life. It stimulates the imagination, changes your mood, helps you relax, and provides endless hours of entertainment.

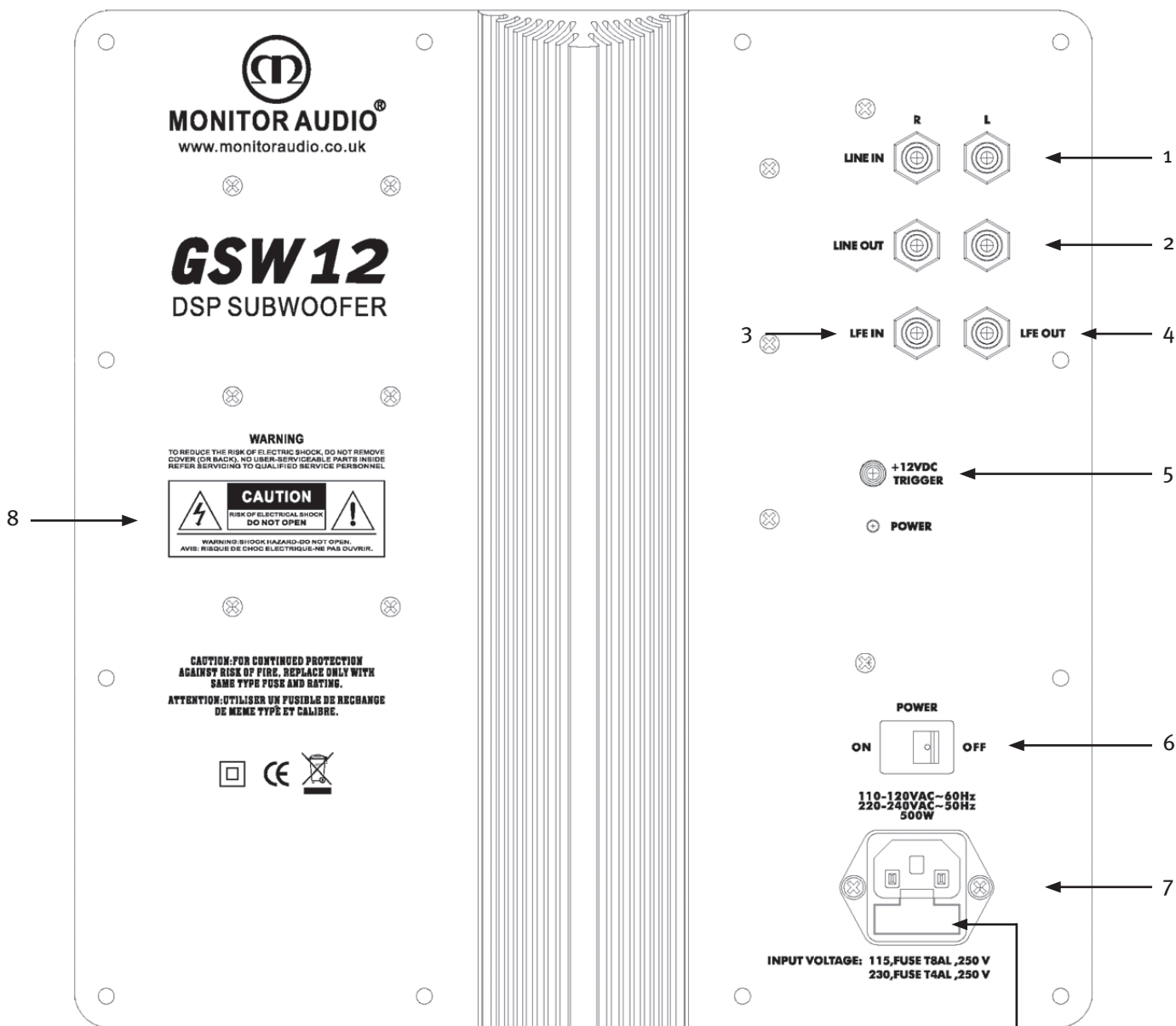
Please read through this manual to familiarize yourself with any safety advice and how best to set up your subwoofer to achieve the very best listening experience.

Please retain this manual for future reference.

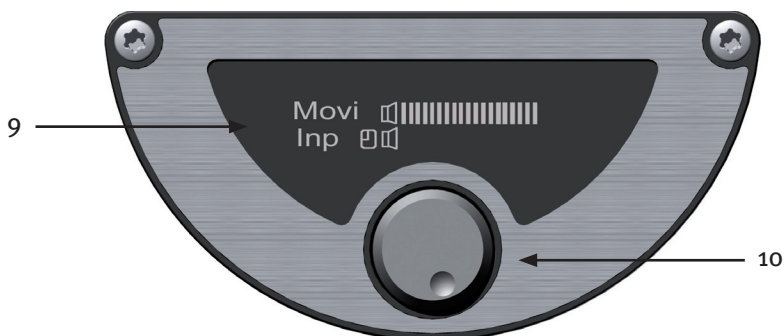
GSW12 Features

- Compact design with forward firing 12” long-throw woofer.
- Class D amplifier section with advanced SMPSU (Switch mode) power supply unit.
- Dynamic power limiter. DSP (Digital Sound Processing) control of the power amplifier monitors available power and limits certain frequencies dependant on available power reserve.
- Sealed cabinet for ultimate bass control and ease of installation.
- Main features and settings adjustable by remote control.
- Full DSP Control with all functions controlled in the digital domain, providing more advanced control of complex filter characteristics than conventional analogue circuitry.
- Individual control of input sources. E.g.; an LFE input and an alternative input such as 2 channel hi-fi amp can share a single GSW12.
- 4 x pre-set EQ settings and 1 x user adjustable EQ setting.
- 10-band graphic Equaliser to provide room correction and fine-tuning.
- System optimization and integration with a wider range of speaker applications.
- Auto switch on/off, or 12V trigger input. Controlled by DSP to provide accurate automatic switch on when an input signal is detected.
- Front mounted IR sensor with LED to indicate remote actuation.
- Night mode setting.

Amp and Control Panel



7a



1. RCA Line Level Inputs (Stereo Left & Right)

For connection to a 2 channel/ stereo amplifier system. Connection should be provided by a pair of high-quality signal cables from the pre-out section of an amplifier. Note: - cable lengths should not exceed 10 metres to avoid interference from other electrical appliances.

2. RCA Line Level Outputs (Stereo Left & Right)

RCA line level outputs are provided in order to use other sub-woofers in conjunction with the GSW12 by 'daisy chain' type connection. The outputs are link out only connections and do not provide any form of filtering.

3. LFE Input (RCA Type)

This input is to be used when connecting the GSW12 to an AV amplifier/receiver. When using the LFE input, the crossover function in the menu/set-up is not used. This is due to the crossover function being controlled by the AV amplifier/processor to which it is connected. Please refer to the crossover table on page 10 for further advice on which setting to use. Input between LFE and Stereo input (Inp) can be switched using the 'LFE' button on the remote control unit.

4. LFE Output/Link (RCA Type)

LFE output is provided in order to use other sub-woofers by 'daisy chain' type connection. The output is a link out only connection and does not provide any form of filtering.

5. 12 Volt Trigger Input ~ Centre Pin = +12Vdc.

For external power control from AV amplifier/Receiver to the GSW12. Monitor Audio recommend using this function and a lead is supplied. This 12 volt signal is supplied by the AV amp/receiver and tells the GSW12 to turn on from standby mode. This allows a more accurately controlled method of the auto on/off function. It is also a lot more energy efficient. The display will change from a clock to a '3.5mm jack' image (see key on page 1 of Set Up Guide for illustrations). The stand by function on the remote will not be operable when using the +12v trigger.

6. Mains Power Switch

Mains 'rocker switch' providing overall power off and on/auto. In the on/auto mode, the unit will turn on when an input signal is sensed, and will turn off after a user preset delay when the signal is removed (source turned off).

7. IEC Mains Power Connector/Fuse Location

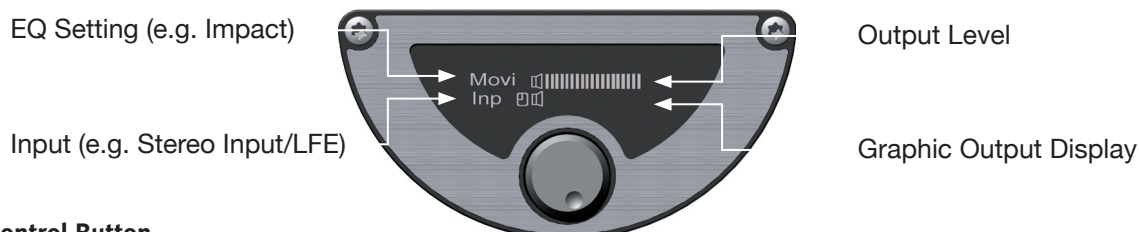
The GSW12 is supplied with a two-pin mains input socket for connection to the mains supply. Use ONLY the appropriate IEC mains lead provided with the product. Also fitted is an external mains fuse. If a fuse blows during operation a spare fuse is provided within the fuse holder for replacement. If you wish to change the fuse, you can do this by removing the IEC mains lead and carefully levering out the original fuse from its holder below the IEC mains input socket (7a). If the fuse blows again it is advisable to seek help from an authorised service agent. DO NOT attempt to re-fit a further fuse as this could result in serious damage to the amplifier unit.

8. Recycling and Approval Certification

The approval identities will differ to that displayed depending on the country you are in.

9. Display

This LCD display provides full feedback of the amplifier settings. The default display will show the EQ settings, the output volume and graphic output display (constantly changing). When the enter button is pressed (on the remote), or the encoder pushed down, the 'menu' system is displayed. For full details of the menu system, please go to page 9.



10. Push-Turn Control Button

This gives you full control (except EQ selection) of your GSW12. By default, you can adjust the volume (by turning the control button) and enter the menu system. Pushing the rotary encoder allows access of the menu system illustrated on page 9. For more detailed operation and set up please refer to page 10.

Remote Control

NOTE: - The remote control should be directed towards the IR lens located on the front of the GSW12 cabinet. For distance and angle limits please refer to the Set Up Guide (page 2).

1. Mute

Toggle between mute and normal operation. Mute can only be accessed by using the remote control.

2. Power/ Standby

Toggle between standby on/off. Standby can only be operated by the remote control unit. This function will not be operable when using the +12v trigger.

3. LFE

Toggle between LFE and Stereo input. The input mode can only be accessed by using the remote control.

4. Night Mode

Toggle between night mode on/off. Night mode can be accessed by the remote control and by the main control panel menu.

5. Movies

Toggle between movie mode and FLAT/ USER mode.

6. Dynamic

Toggle between dynamic mode and FLAT/ USER mode.

7. Music

Toggle between music mode and FLAT/ USER mode.

8. Impact

Toggle between impact mode and FLAT/ USER mode.
All pre-set EQ's (5-8) can only be accessed by the remote control.

9. Menu arrow keys

Menu control and settings adjustment. The menu keys work in the same way as the push and turn control knob on the main control panel. Volume is facilitated by the up/down keys by default. Menu scroll is facilitated by the left/right keys.

10. Enter key

Enter settings menu and select desired menu function for adjustment.

11. Exit Key

Exit set up menu. Press once for back a step and again for complete exit from the menu system.



Positioning

The GSW12 should now be sited in the most suitable position, preferably not directly in the corner of a room as this may cause excessive bass boom. Once a desirable position is achieved it is important to check if the cables are long enough to reach comfortably without being under tension. **Leave the GSW12 unplugged until you are happy with its location.**



Never connect or disconnect any of the input connections with the GSW12 switched on.

Optimal control settings will depend entirely on your system configuration. For initial trials set the controls as follows:

Set Up

Once in position and cables have been routed; connect them to the GSW12. Mains power cable should be connected last. Do not play any music at this stage.

NOTE: The entire set up procedure can be done via the control panel or remote control handset.

Using an A/V Processor/Receiver

Connect a single interconnect cable from an A/V processor/receiver to the connection marked **LFE input**. LFE must be displayed on the control panel display. If **'Inp'** (indicating stereo input) is displayed, the LFE button on the remote control can be pressed to select LFE. LFE should then be indicated on the display.

Using the LFE input, negates the GSW12's crossover filter. This needs to be set on the A/V processor/receiver. Please refer to the product user manual for further information. As a guide, the crossover should be set up in accordance with the low frequency limit of the main speakers (see table on page 10).

Using L&R stereo inputs

Stereo L & R input may be required if using a 2-channel stereo amplifier, or an older A/V receiver with no LFE output. Connect 2 x interconnect cables (left and right) from a stereo amplifier or A/V processor receiver to connections marked **Line Inputs L & R**. **'Inp'** (indicating stereo input) must be displayed on the control panel display. If 'LFE' is displayed, the **LFE** button on the remote control can be pressed to select **'Inp'**. 'Inp' should then be indicated on the display.

Once the appropriate input has been selected, you can now enter the set up menu. This is done by pressing enter (on the remote) or by pressing the encoder.

Factory Settings

Factory settings are denoted by the symbol in the Set Up Guide:



These should be treated as the initial setting when setting up your product. Further fine tuning of the settings can be done if you feel these factory settings do not match your environment or tastes.

Crossover setting (Stereo left & right input only)

The crossover control should be set in accordance with the size or bass output of the main/satellite speakers. The crossover control can be adjusted in steps of 40Hz, 50Hz, 63Hz, 80Hz, 100Hz, 125Hz and 160Hz. The crossover slope characteristic can also be adjusted from 0 to 54dB/Octave in steps of 6dB. Refer to the chart below as a guide to setting the crossover frequency control to the optimum position. Much will depend on the correct low frequency response of the main speakers and their position in your room. Experimentation is advisable.

Type of Main Speaker	Monitor Audio Product	Crossover Control Setting
Large floor-standing speaker	GS20/60; RS6/8; BR6	40-60Hz
Small floor-standing speaker	RS5; BR5; R270	60-70Hz
Large stand-mount/bookshelf speaker	GS10	50-80Hz
Small stand-mount/bookshelf speaker	RS1; BR1/2; R225/250	60-90Hz
Small satellite speaker	R45/90/180	80-160Hz

Sub-Sonic filter

An adjustable sub-sonic filter is provided to limit the reproduction of infra-sonic frequencies being produced below a useable frequency point. Frequency settings are at 16, 20, 25 and 31Hz with a variable slope characteristic from 0 to 54dB/Octave in steps of 6dB.

EQ

There are five EQ modes to choose from:-

4 x pre-set options (which can be accessed by remote control during operation) Music, Movies, Dynamic & Impact. These can be set at any time in accordance with personal choice or the predominant operation of the system.

NOTE: The Graphic EQ cannot be adjusted when using the 4 x pre-set modes.

1 x User mode (FLAT). The FLAT (User mode) mode can be accessed only by remote control. Pressing the 'movies' button (for example) when already in the movie setting will select the FLAT mode. This will now allow the installer/user to access the 10 band graphic equaliser settings and make adjustments. +/- 6dB gain or cut can be obtained at the pre-set frequency divisions of 20Hz, 25Hz, 31Hz, 40Hz, 50Hz, 63Hz, 80Hz, 100Hz, 125Hz, and 160Hz. The FLAT EQ setting will change to 'USER' when any changes have been made to the graphic equaliser.

To access the FLAT/ USER graphic equaliser, you need to be in this EQ setting before entering the set up menu. These features can be used to provide a more accurate 'in room' balance and is particularly effective at counteracting room modes or positioning anomalies. A 1/3 Octave spectrum analyser or hand-held dB level meter, capable of accurately measuring down to 20Hz will be required to achieve optimum settings.

Night Mode

This setting limits overall dynamic capability and SPL by using a compressor type limiter.

Phase

The Phase Control is used to synchronise any delay between the GSW12 and main/satellite speakers. When the GSW12 is in phase with the main/satellite speakers the sound should be full bodied. Sit in a normal listening position whilst adjusting the phase settings. When set correctly the location of the subwoofer should be almost undetectable. Experimentation is advisable. However it should be noted that in most cases the phase control should be set to 0 degrees, especially when using a digital A/V processor or A/V receiver amplifier.

Auto Off

This menu allows the user to select the auto turn off delay time. The time delay can be adjusted from 5- 25 minutes in 5 minute intervals.

Save data

Push the control button (or press enter) to save your set-up data. The display will show SAVE OK, to confirm the settings have been saved successfully. These settings will now be remembered when the GSW12 is switched off.

Volume level adjustment

Once data has been saved the volume can be adjusted to the desired level either by the main control panel or by using the remote control. Accurate level (volume) calibration can be done by using the auto-set up procedure of the A/V processor/receiver – See manufacturer's user guide for details. Alternatively a 1/3 Octave spectrum analyser or hand-held dB level meter, capable of accurately measuring down to 20Hz can be used to check and adjust the volume level.

Specification

Amplifier Output	600 Watts (RMS) 1200 Watts (Peak)
Crossover (Low Pass)	40Hz - 160Hz Variable slope characteristic from 6 – 54dB/Octave
Sub-Sonic Filter (High Pass)	16, 25 & 31Hz Variable slope characteristic from 6 – 54dB/Octave
EQ	4 x Preset 1 x User Set
Equalisation	Graphic 10 Band Equaliser. ± 6dB in 0.5dB steps
Digital Volume Level	-80 – 0dB in 1dB Increments
Auto Sensing Input	Line Level >5mV (RMS)
Requirements	5 – 25 minutes, user adjustable.
Cabinet Specification	Sealed Cabinet with 25mm M.D.F construction with critical internal bracing. Sealed amplifier compartment.
Amplifier Classification	Class- D amplifier, with SMPSU (switch mode power supply) and DSP control
Driver Compliment	1 x 12” C-CAM® sub-woofer driver featuring triple suspension and 4” long throw voice coil
Dimensions	Millimetres - 390 x 390 x 420 (H x W x D)
Inches	15 3/8 x 15 3/8 x 16 9/16 All dimensions excluding grille and feet
Weight (unpacked)	28 Kg (61.5lbs)
Mains Input Voltage:- (Automatically selected)	100 -120Vac, 220 - 240 Vac
Fuse Type	For countries with 220 – 240Vac supply use: 4A/250V 20MM UL/VDE For countries with 100 – 120Vac supply use: 8A/250V 20MM UL/VDE
Trigger Input	3.5mm Jack input, +12Vdc = On State
Code System for All in One Remote Controls	NEC SH6122

C-CAM® is a registered trade mark of Monitor Audio Ltd

Trouble Shooting

Should you experience any technical, or set-up problems with your GSW12 please check the Trouble Shooting Guide below:

My GSW12 will not turn on/no power

- Is the LED illuminated on the back of the unit? If not, then check your mains lead is properly connected both at the GSW12 and at the mains outlet. Also check the fuse of the mains plug (where fitted) and also the fuse in the GSW12. See page 7 for further info on changing the fuse and it's location.
- Is the LED on the back red? If so, you have power going to the unit. It could be that there is no signal, or the 12v trigger is connected and the source not turned on (see below).
- Have you got the 12v trigger connected? If so, the GSW12 will not power up using the remote with this connected. It will only turn on when the 12v trigger source is powered up.
- Has it got a signal going to it? If so, and the signal is turned on, try adjusting the volume level of the source.

If it still does not turn on/ power up, please contact your local dealer/ distributor or Monitor Audio immediately.

No sound from GSW12

- Check the correct input is selected to suit your needs.
- Is the LED on the back red or green? If it is red, then the unit hasn't actually turned on. See above comments. If it is green, then your unit is powered up and turned on. Check further suggestions below.
- Is your unit in night mode? If so, turn it off via the remote.
- Is the volume just very low?

If it still does not output a signal, please contact your local dealer/distributor or Monitor Audio immediately.

Display on top of the GSW12 does not work

- Is the unit powered up? Check the points above.
- Is there sound from your GSW12? Check the points above.

If it still does not have a display, please contact your local dealer/distributor or Monitor Audio immediately.

Guarantee and Service

Valid upon completion of the incorporated warranty card and its return within 30 days of purchase.

This equipment has been fully tested prior to dispatch from the factory. Both the craftsmanship and the performance of this product is guaranteed against manufacturing defects for the period of one year from the date of purchase (see conditions below), provided that the product was supplied by an authorised Monitor Audio retailer under the consumer sale agreement. (The words 'consumer sale' shall be construed in accordance with section 15 of the supply of goods act 1973). Monitor Audio accepts no responsibility for defects arising from accident, misuse, abuse, wear and tear, modification or operation outside of that specified within this instruction manual. Neither will responsibility be accepted for damage or loss occurring during transit to or from the parties claiming under this guarantee.

This guarantee covers both labour and parts. The liability of Monitor Audio is limited to the cost of repair or replacement of the defective parts (at the discretion of Monitor Audio) and under no circumstances extends to consequential losses or damage.

Claims under this Guarantee

The equipment should be returned in its original packaging to the original supplier where possible, or to any other authorised Monitor Audio dealer. If it is not possible to return the equipment by hand, then it should be sent carriage prepaid via a reputable carrier. If the original packing is not available replacement packaging can be purchased from Monitor Audio. If you have any difficulties complying with these requirements please contact us at the following address:

Customer Service	Tel: 44 (0) 1268 740580
Monitor Audio Ltd.	Fax: 44 (0) 1268 740589
Unit 2, 24 Brook Road	Internet: www.monitoraudio.co.uk
Rayleigh	Email: info@monitoraudio.co.uk
Essex	
SS6 7XL	
England	

This guarantee does not affect the statutory rights of the consumer under UK law.

Data Protection

We at Monitor Audio are committed to respecting the wishes and privacy of our customers. Any information you provide will be held in the strictest confidence and only used within the Monitor Audio organisation for the provision of services such as warranty claims or spare parts.

We may wish to contact you in the future to ensure you are happy with the products and standards of service we provide and to keep you up-to-date with the latest products and promotions we have to offer.

Should you wish not to be contacted by us either by post, e-mail or phone, please tick the box on the warranty card. Alternatively you can request not to be contacted in future by writing to Customer Service, at the address above.

EC Declaration of Conformity

EC Declaration of Conformity

We, Monitor Audio Ltd.
Unit 2,24 Brook Road
Rayleigh
Essex
SS6 7XL
England



Declare in own responsibility, that the GSW12 product described in this manual is in compliance with Technical Standards/Council Directives:

(LVD) 2006/95/EC Low Voltage Directive

EN60065: 2002+A1: 2006 Safety requirements for mains operated electronic and related apparatus for household and similar use.

(EMC) 89/336/EEC Electro Magnetic Compatibility

EN55013: 08.90+A12:08.94+A13:12.96 Limits and methods of measurement of radio disturbance characteristics of broadcast receivers and associated equipment.

EN55020: 12.94+A11:12.96 Electro magnetic immunity of broadcast receivers and associated equipment.

EN61000-3-2: 04.95+A1:1998+A2:1998 Electro magnetic compatibility (EMC) – Part 3: Limits – Section 2: Limits for harmonic current emissions (equipment input current up to and including 16 Ampere per phase).

EN6100-3-3: 01.95 Electro magnetic compatibility (EMC) – Part 3: Limits – Section 3: Limits of voltage fluctuations and flicker in low-voltage supply systems for equipment with rated current up and including 16 Ampere per phase.

Signed by:

A handwritten signature in black ink, appearing to be 'D.S. Hartley'.

Name: D.S. Hartley

Position : Technical Director

Company: Monitor Audio Ltd

Owner Information

Product Details

Model GSW12

Product Serial No:.....

Date of Purchase:.....

Dealer Details

Dealer Name:.....

Address:.....

Town, Post code, Country:.....

e-mail address:.....

Settings/Notes:

LFE Input

Left & Right Stereo Input

Crossover (Set on AV amplifier/processor):.....

Crossover (Set on AV amplifier/processor):.....

.....

.....

Sub-Sonic Filter:.....

Sub-Sonic Filter:.....

.....

.....

EQ:.....

EQ:.....

.....

.....

Night Mode:.....

Night Mode:.....

.....

.....

Phase:.....

Phase:.....

.....

.....

Auto Off:.....

Auto Off:.....

.....

.....

Additional Notes:.....

.....

.....

.....

.....



Monitor Audio Ltd.
Unit 2, 24 Brook Road
Rayleigh, Essex
SS6 7XL
England
Tel: 01268 740580
Fax: 01268 740589
Email: info@monitoraudio.co.uk

www.monitoraudio.co.uk
Designed in the United Kingdom

Version 1